

# Royal Institute of Technology (KTH)

*Kungliga Tekniska Högskolan*

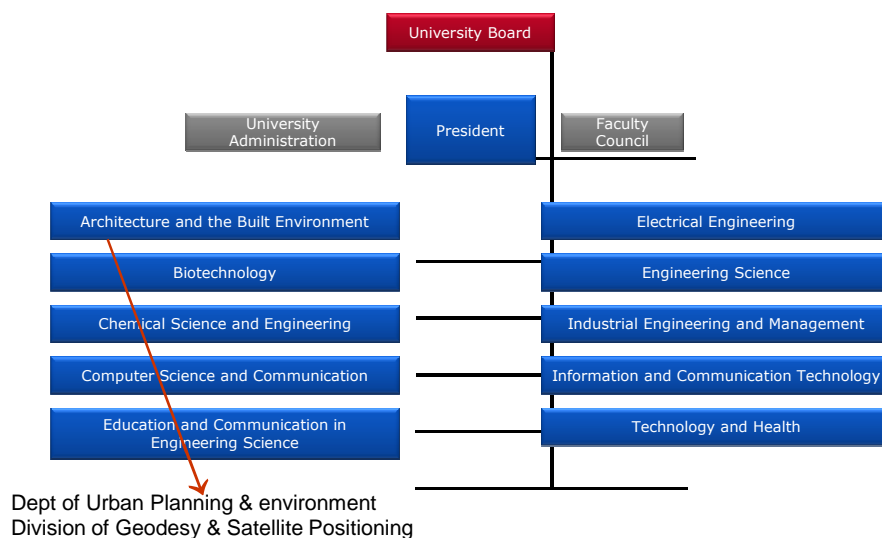
[www.kth.se](http://www.kth.se)



Huaan Fan, [huaan.fan@abe.kth.se](mailto:huaan.fan@abe.kth.se)

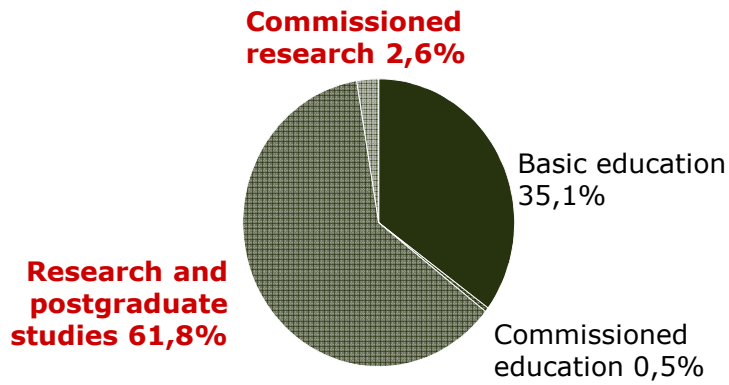
- Founded in 1827
- Largest oldest tech. univ. in Sweden
- 14000 BSc/MSc students (3+2)
- 1700 PhD students
- 4600 staff
- 450 million € (2015)
- **QS ranking: 97** (2016/2017)

## KTH's organisation



## A research-intensive university

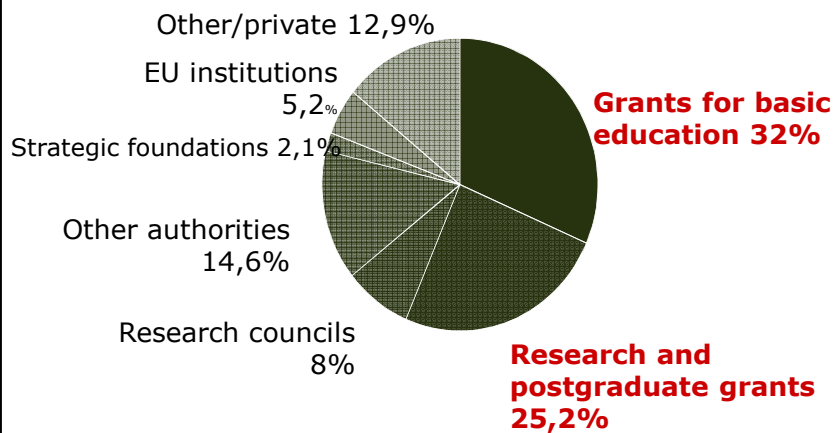
---



3

## High dependence on external funding

---



4

## My Tempus/Erasmus+ Projects

---

### – Coordinator:

1. 2003-2005 Geodesy/GIS, Moldova
2. 2005-2007 Geodesy/GIS, Kyrgyzstan
3. 2007-2009 Geodesy/GIS, Kazakhstan
4. 2007-2009 Geodesy/GIS, Tajikistan
5. 2011-2013 Geodesy/GIS, Armenia, Moldova, Ukraine
6. 2014-2016 Geodesy/GIS, Kosovo (finished Nov 2016)
7. 2016-2018 [GEOWEB](#), Albania, Bosnia, Serbia
8. 2017-2019 [InnoCENS](#), Belarus, Armenia, Georgia, Kazakhstan

### – Partner:

9. 2012-2015 GIS MSc, Uzbekistan (*coordinator: UWH*)
10. 2016-2018 [GIS/turism](#), Armenia, Georgia (*coord:UPV*)

## KTH's role in InnoCENS project

---

- Coordinator for the whole project
- WP leader for WP 2: innovation systems
- WP leader for WP 6: project management
- WP leader for WP 8: Monitoring/quality control
- Organize study visit in Sweden
- Involve in curricular workshop
- Support development of 2 master courses
- Support establishment of Innovation centres